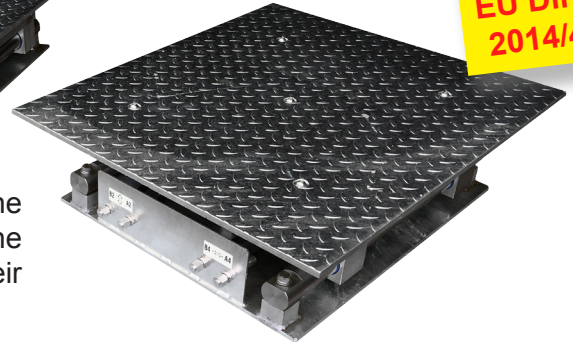
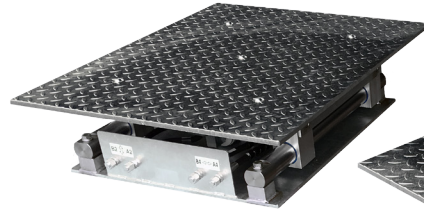


# ESCON HYDRAULISK SLITASJETESTER



The ESCON hydraulic play detector for heavy vehicles is designed to check quickly and efficiently most steering and suspension components. It lets a technician detect play and wear in the wheel guiding and steering parts. The play detector consists of a hydraulic power control unit with control lamp and two moving platforms, each with a hot dip zinc chequered plate. Each platform is actuated by two hydraulic cylinders. The control lamp contains four (PD5810, PD5815) or eight (PD5820, PD5830) buttons. Both the control lamp with cable (PD5810, PD5820) and a wireless RF control lamp (PD5815, PD5830) are available. A set of floor frames is optional but recommended.

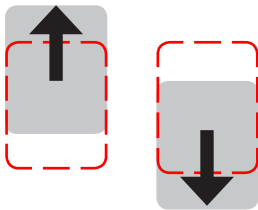


Meets the  
EU Directive  
2014/45/EU

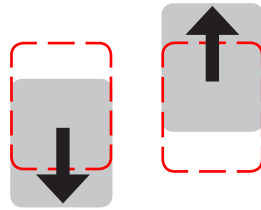
Pressing a key on the control lamp causes a movement in the indicated direction. The platforms keep moving as long as the button is pressed, or until they have reached the end of their stroke. The platforms stop when the button is released.

## Movements platforms PD5810 & PD5815

FRONT/REAR  
movement



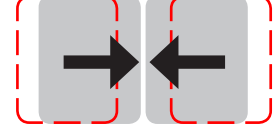
REAR/FRONT  
movement



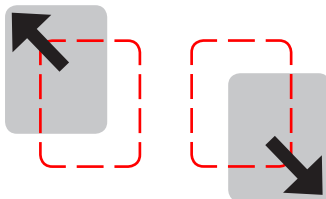
LEFT/RIGHT  
movement



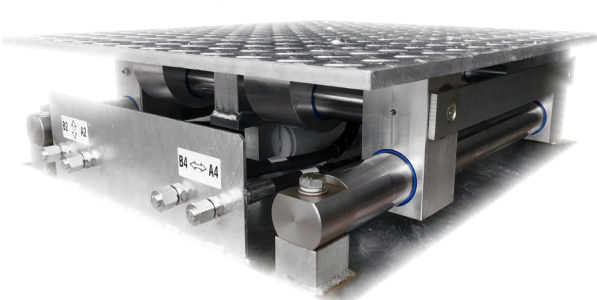
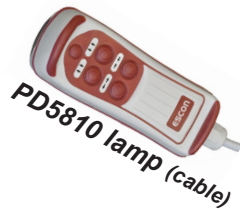
RIGHT/LEFT  
movement



DIAGONAL  
movement



A diagonal movement is performed when a Front or Rear key is pressed simultaneously with a Left or Right key.



## Movements platforms PD5820 & PD5830

All movements PD5810 & PD5815 +

- Anti-fuse movements
- Automatic mode
- Independent movement left/right platform



PD5815-PD5830 lamp (RF)

## Specifications

- Operation: *Electro-hydraulic*
- Maximum axle load/wheel load: 20 ton / 10 ton (drive over)
- Maximum working pressure: 180 bar
- Maximum horizontal force/plate: 30 kN
- Longitudinal/transversal movement: 100 mm
- Movement speed: 70 mm/sec
- Cable length: 6,5 m (PD5810, PD5820)
- Dimensions platforms: 950 x 800 x 217 mm (L x W x H)
- Dimensions hydraulic unit: 360 x 300 x 875 mm (L x W x H)
- Motor: 4 kW, 3PH+N+E 400V / 50Hz

Technical specifications are subject to changes without notice.

Esccon PD5810-15-20-30 GB 20180401

AGDER SUPPLY AS, Kristian Birkelands vei 1, 4820 Froland, Norge.  
Tlf: +47 37 23 51 10, [www.agdersupply.no](http://www.agdersupply.no), [salg@agdersupply.no](mailto:salg@agdersupply.no)

# ESCON